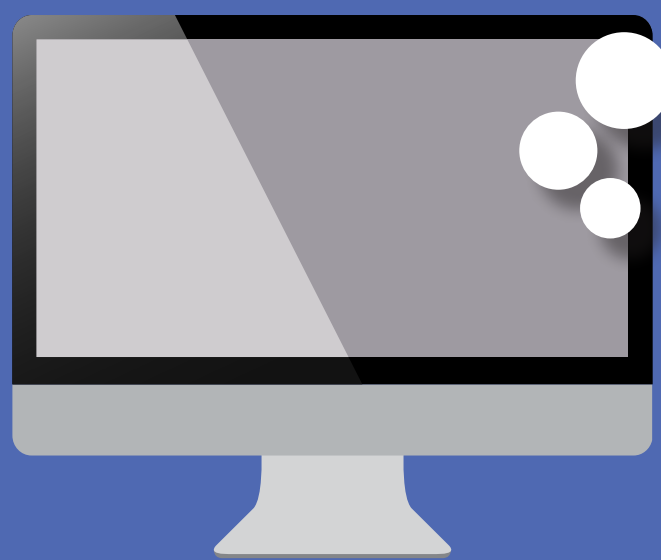


EDTECH USAGE

Myth vs. FACT

How much do you know about how edtech is used in schools? Clever asked hundreds of teachers and administrators. **The results may surprise you.**

MYTH Almost all purchased student licenses for edtech programs are activated within the school year.



Zzz

FACT

70% of licenses don't get used at all.*

MYTH School districts download and look at usage reports for their edtech programs regularly.



10% of district staff look at reporting data every week, whereas **26%** haven't accessed any reports during the school year.

FACT

MYTH District administrators know the recommended usage that will lead to student achievement for their purchased edtech programs.

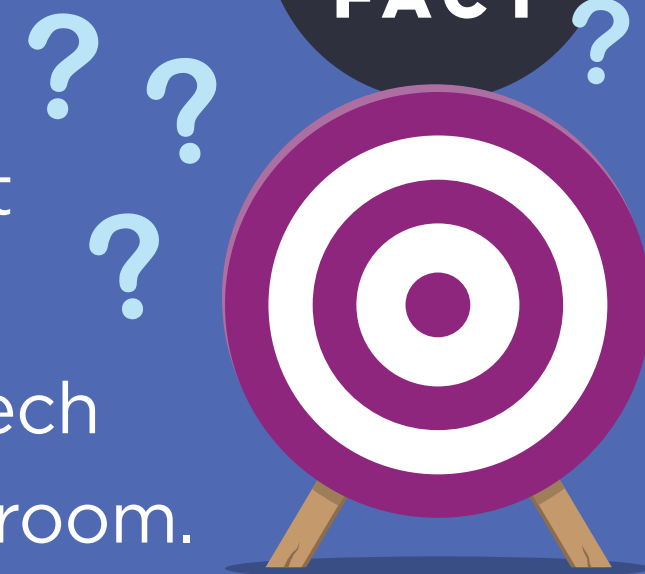


25% of district admins report they know the recommended usage. And **30%** don't know ideal usage targets for almost all of their programs.

FACT

MYTH Teachers know how often students should use edtech programs to drive learning outcomes.

10% of teachers know the recommended usage. Most teachers don't know the ideal targets for the majority of edtech programs they use in the classroom.



FACT

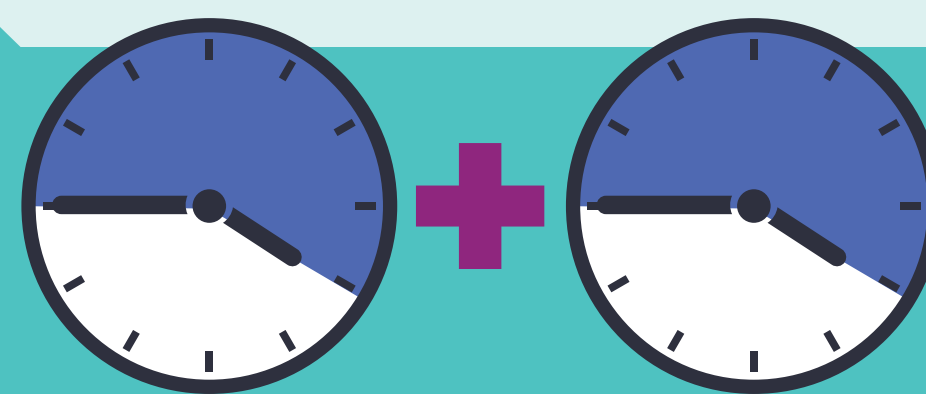
MYTH The biggest barrier to district staff and teachers using more data is that they don't have time to look at it.

33% of districts and teachers say that the real challenge is that the data is in too many places for them to access.



FACT

MYTH It would only take a few hours to put together a usage report for all edtech programs at a school or district.



District administrators say it would take them nearly **14 hours** to pull a comprehensive report - almost two full working days!

FACT